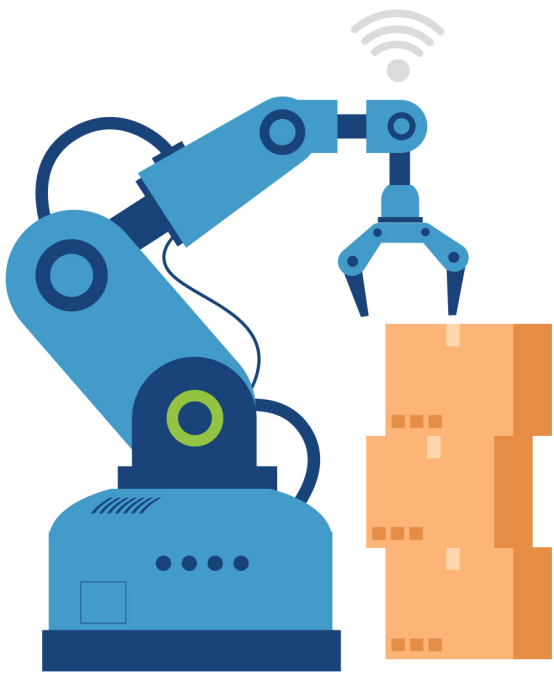




## WHAT'S DRIVING THE RAPID ADOPTION OF

# AUTOMATION?

Companies have cited different reasons for implementing robotics and automation in their warehouses. The following are the most common ones:



### ECONOMICS

Robotics can reduce labor costs, work around the clock, and add precision to certain tasks.



### INCREASE PRODUCTIVITY

Robots may take up less space than human workers or human-driven vehicles, which is crucial when warehouses are running at capacity.



### SAFETY

Workers often face repetitive stress, extreme temperatures, and even high-voltage environments.



### TO ELIMINATE WASTE

To err is to be human. In manufacturing, human error leads to wasted time and resources.



### FOR LIGHTNING FAST TURNAROUND TIMES

Slow turnaround on jobs can be a deal breaker for many manufacturing customers.



### TO IMPROVE QUALITY AND SAFETY

Rework due to poor quality acts like an anchor on production time and lowers customer satisfaction.



### TO FUTURE PROOF YOUR BUSINESS

In today's constantly changing manufacturing markets, success often depends on seeing where customers are going and getting there first.

